



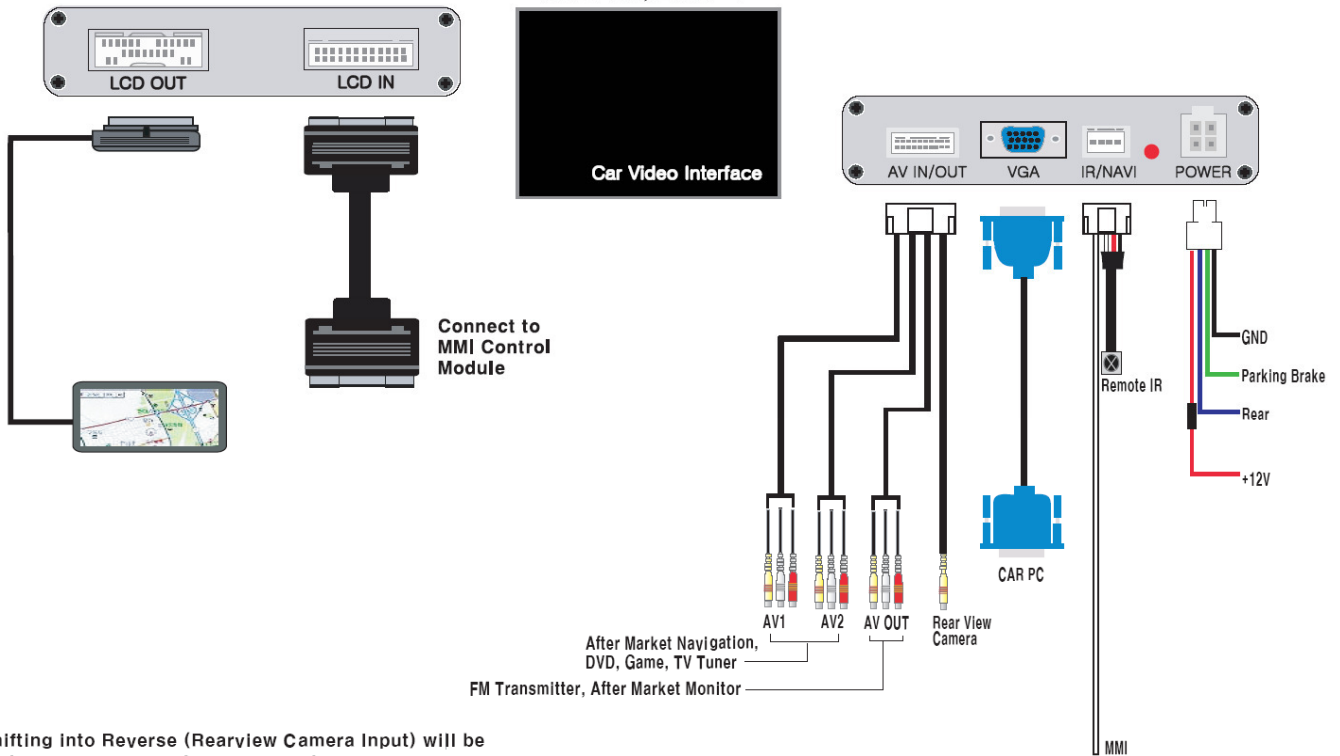
# AUDIA6A8

Video Input Module For 2004+ Audi A6, Audi A8 and Audi Q7

**Warning**

1. Before working, please make sure the vehicle power is off (please keep in mind when pulling out the key, only monitor supply would be off but whole vehicle power supply would be off 5 minutes later).
2. Starting with separating of the monitor and the connector removed in working may causes an error code. Do not start until the work is done.
3. Please use appropriate measure of tools
4. Do not force excessively in assembling or disassembling, tightening or pulling
5. Using protecting clothes or taping around the working area, take care of scars
6. Please make sure to connect the power cable using a fuse when you use it with pulling out the power supply.

**System Connection Diagram**



\*\*\*\*\*  
 When shifting into Reverse (Rearview Camera Input) will be displayed automatically on LCD screen when present.  
 If no Rearview Camera present automatically change to Main Screen.

**\*CAUTION**

\*\* Navi Wire(White)connection.  
 Find Pin No.16 at the 20 pin connector,  
 and Joined with White wire

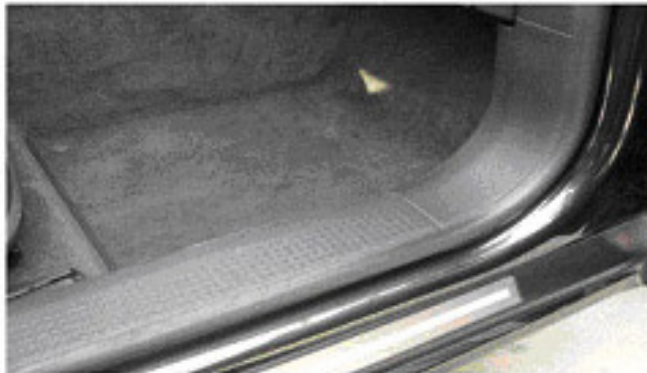
LVDS IN AND OUT	The NV_AUDIA6A8 unit is installed inline of the Audi's OEM LVDS connector. The factory Audi LVDS connector that is plugged into the back of the Audi system will connect to the port labeled "LVDS IN" on the NAV VIDEO Module. Then, the LVDS cable provided with the NAV VIDEO Module will connect to the port labeled "LVDS OUT", the other end of this cable will be plugged into where the factory Audi LVDS connector was once plugged into, at the back of the Audi system.
AV1 IN	Composite Video & Audio Input For Any Video Device (only video will go into the OEM navigation / multimedia system, audio is only for output switching)
AV2 IN	Composite Video & Audio Input For Any Video Device (only video will go into the OEM navigation / multimedia system, audio is only for output switching)
AV OUT	Will output the audio and video from AV1 or AV2 or AV3 depending on which is currently selected.
REAR VIEW CAMERA	This composite video connector will accommodate a rear video camera that features an NTSC composite output. This input is trigger-able with the "LAMP RV" wire, so when the vehicle goes into reverse, this input is displayed.

VGA IN	This connector allows the connection of a Car PC / Carputer. The resolution of the VGA output on the Car PC should be set to 640x480 at 60hz
REMOTE IR	Infra red eye that allows that will be mounted somewhere in the dash.
RED WIRE	12V DC Input
BLACK WIRE	Ground
BLUE LAMP/RV	Reverse trigger. When 12V DC is applied to this wire, the REAR VIEW CAMERA INPUT will automatically be displayed on the screen. This is often used for a reverse camera setup.
GREEN WIRE	Parking brake ground. Safety ground. This wire must be grounded for video in motion to work.
MMI (WHITE)	This white wire can optionally be connected to PIN 16 at the 20 pin factory connector under the dash to allow the NAV button on the console to switch video inputs on the module, eliminating the need for the remote control. Instructions on where to find this wire and how to connect it are found near the end of this guide.

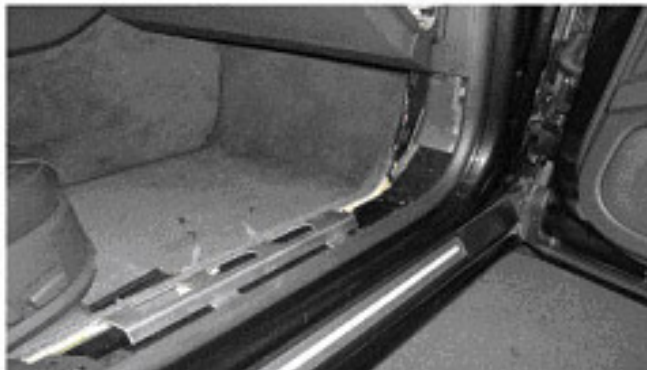
### General Installation

Note, pictures below are from an Audi A8. Location of GPS unit in A6 and Q7 may vary. GPS unit if not found under the dash is in the trunk.

See [Pic- 2](#) and [Pic-3](#)

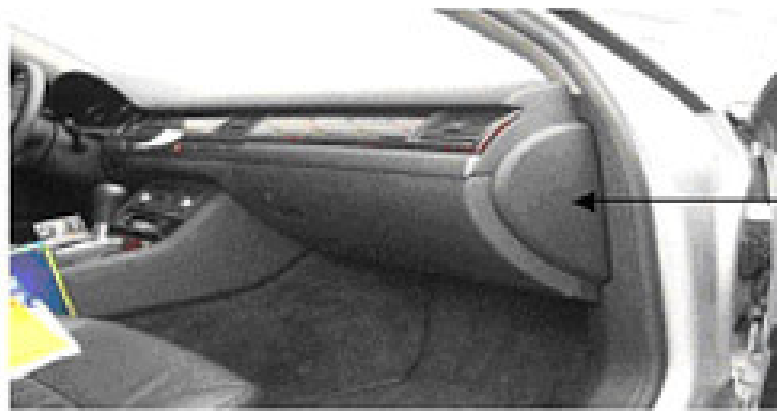


[Pic - 2](#)



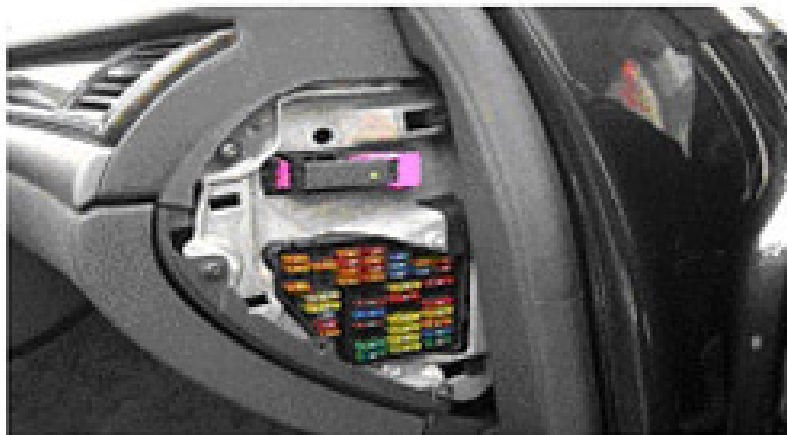
## 5-2. Open fuse box cover

See Pic-4 and Pic- 5. Open fuse-box cover



Pic - 4

Fuse-Box



Pic - 5

### 5-3. Remove CD-Changer

Remove CD-Changer Pic-6



Pic - 6

### 5-4. Remove glove

Remove glove-box



Pic - 7

Remove glove box

Remove Glove-Box fixed screws using Special tools  
(Pic-8, Pic-9)



Pic - 8



Pic - 9

Fixed screw

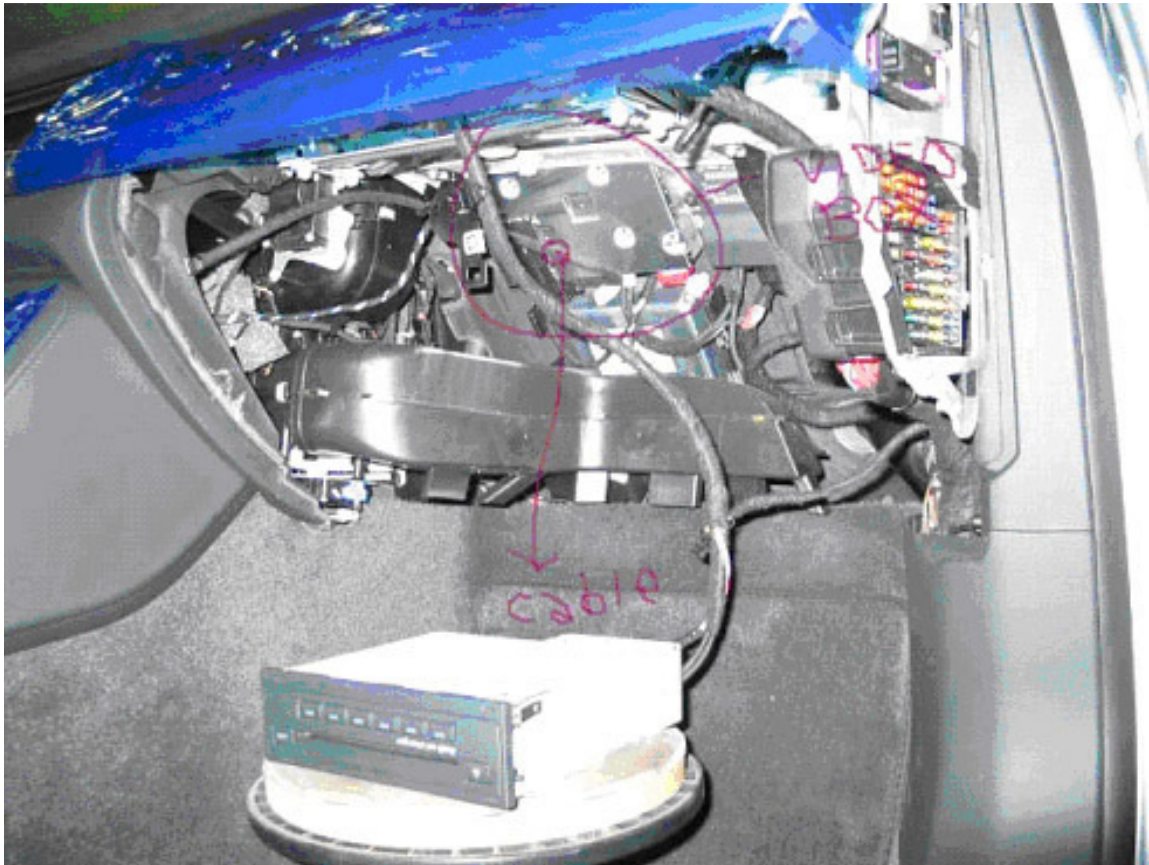
## 5-6. Set navigation instead of rack box in glove box

Set Navigation at rack box in glove box (see Pic- 10)

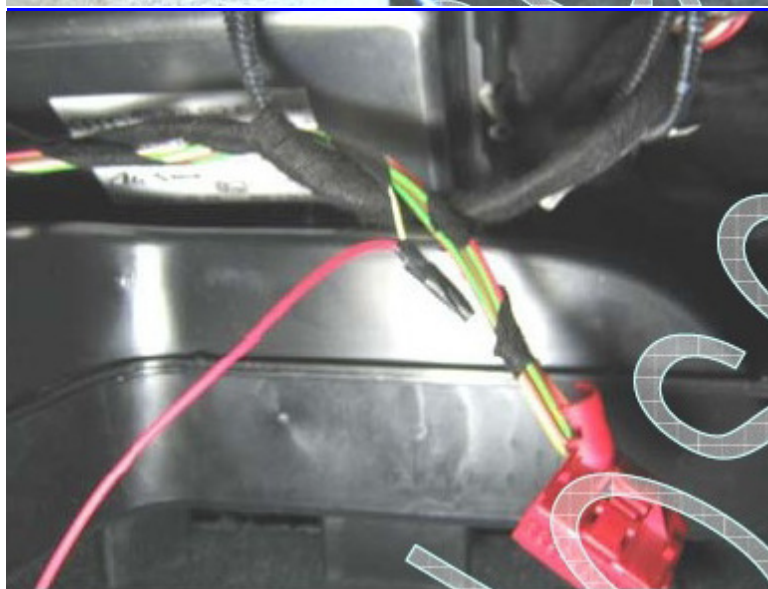
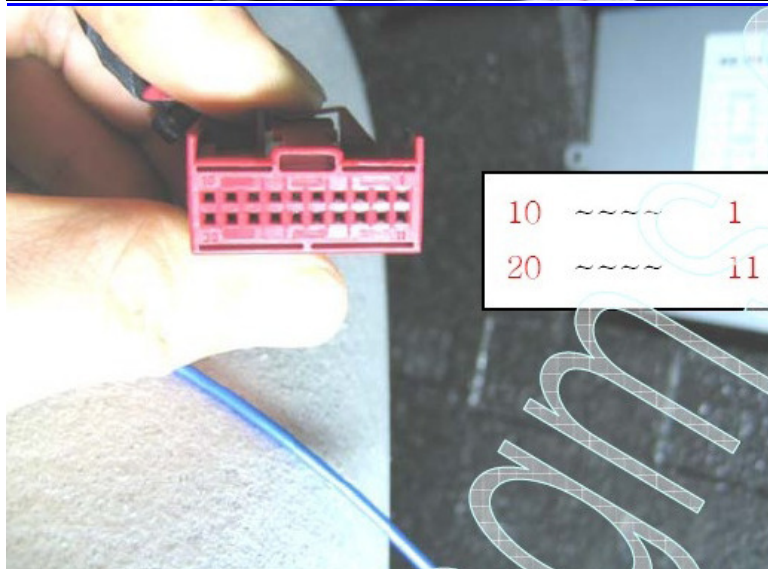
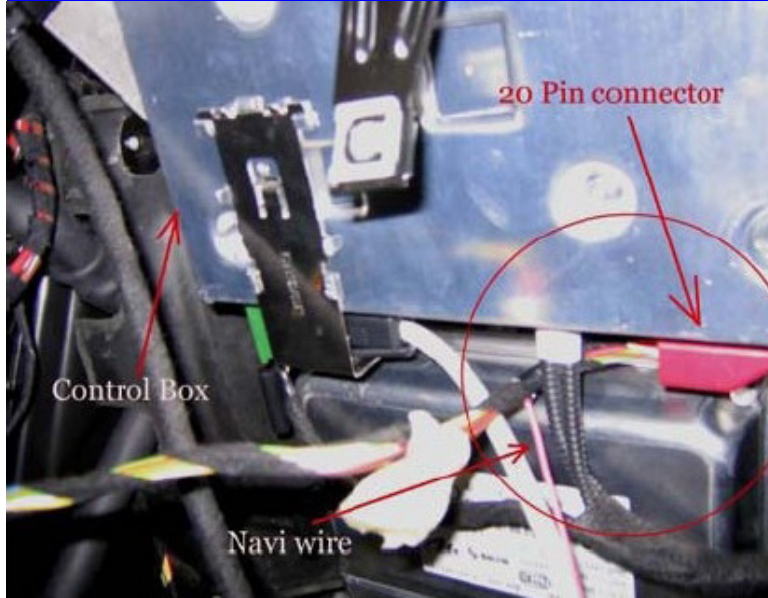


Navigation

Pic - 10



## OPTIONAL : Connecting yellow / orange I-drive wire to OEM Harness for OEM Nav Button Control



### This is an OPTIONAL PROCEDURE

This yellow / orange wire on the main power connector of the module can optionally be connected to PIN 16 of a factory connector under the dash to allow the NAV button on the console to switch video inputs on the module, eliminating the need for the remote control. Instructions on where to find this wire and how to connect it are found near the end of this guide.

- Find the 20 pin connector under the dash board.
- Locate the 16<sup>th</sup> pin / wire
- Splice into the wire being careful not to completely sever it.
- Attach the orange/yellow i-drive wire to the exposed wire.
- Solder, shrink wrap or tape up the connector.
- You should now be able to press the “nav” button on the console to switch between video sources instead of using the remote.