

NAV-TV

INTERFACING THE FUTURE

100 NW 11th Street, Boca Raton, FL 33432 TEL 561-955-9770 FAX 561-955-9760

www.nav-tv.com info@nav-tv.com

REC AV

Single or dual camera, and/or A/V or VES video input for 06-08 Chrysler REC navigation radio

What's in the Box	
<ol style="list-style-type: none"> 1. Plug-n-Play harness 2. REC-AV module 3. Video/camera input harness 4. USB Cable 5. Audio input T-Harness 6. AV switcher (Optional: for dual camera or camera + AV/VES input) 	

User operation	Radio Operation
<p>VES</p>	<p>Press the "MODE" button until the VES tab is highlighted. Once the tab is selected, the video screen will automatically be displayed.</p>
<p>Rear view camera/Forced camera</p>	<p>Double tap the power button on the radio. This will automatically display the backup camera regardless of gear or motion. To disable forced camera, double tap the radio power button again. <i>(Rear view camera will always activate automatically in Reverse.)</i></p>
<p>Front camera (optional, requires AV switcher; see below)</p>	<p>When this feature is enabled, the forced camera mode will alternate between the rear camera and the front camera. (Radio → Rear → Radio → Front → Radio...) <i>(Rear view camera will always activate automatically in Reverse.)</i></p>

Installation	
<ol style="list-style-type: none"> 1. Remove the radio from the dash. 2. Plug in the supplied Plug-n-Play harness between the radio and factory connection (22 pin connector). 3. Connect the module to the harness and locate it in a secure location in the dash (be sure to program the module for required features before installation.) <p>Rear Camera:</p> <ol style="list-style-type: none"> 1. Install rear camera; run the video signal and camera power to the radio. 2. Plug the video signal from the camera into the video/camera input harness. <i>(If more than a backup camera will be connected, see below.)</i> 3. The power wire of the camera gets connected to pin 8 (White/Black) of the module. <ul style="list-style-type: none"> • Do not connect the camera power to reverse lights; otherwise, forced camera will display a blank screen. • A relay (triggered by the White/Black wire) is highly recommended to supply power to the camera. 	

VES input (External AV source) w/ Backup camera	
<ol style="list-style-type: none"> 1. Connect the supplied 10 pin audio input T-harness (with red and white RCA's) between the radio and factory harness. <i>(Note that the factory harness may not be populated.)</i> 2. Plug the audio output of external AV source into the red and white RCA's. 3. Connect the video output of the AV source to the yellow plug labeled "FACTORY AV" of the AV switcher. 4. Plug the supplied video/camera input harness into the radio. Plug this harness into the yellow "AV OUT" plug of the AV switcher. 5. The rear camera signal goes to the plug labeled V2 of the switcher. 6. If a front camera is being connected, its signal goes to the plug labeled V1. <p><i>*Note- If the vehicle has factory VES installed, DO NOT connect audio T-harness.</i></p> <p><i>* In order to view the video from the Factory VES, the VES module must be sent in for a video modification.</i></p>	<p><i>*Note- The audio inputs/outputs are not used.</i></p>

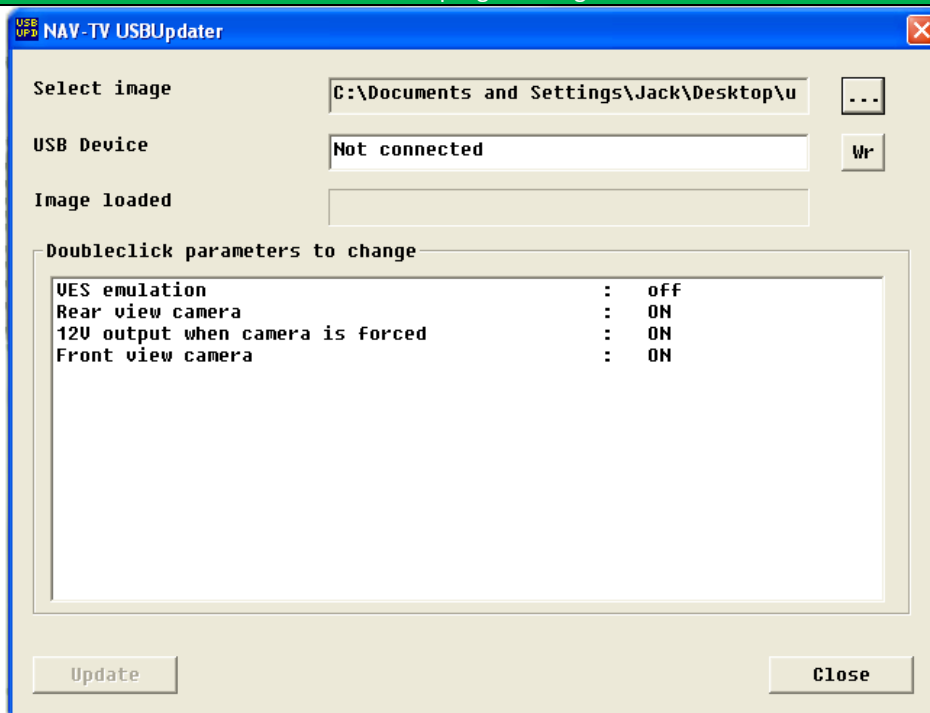
Multiple video inputs using the optional switcher

When installing a combination of rear camera, VES emulation and/or front camera, an optional switcher is required. This will allow multiple video inputs to be accessed properly.

AV Switcher Connections	Input Source
Factory AV	External video source
AV out	Video/camera harness RCA
V1	Front camera
V2	Rear camera

AV Switcher Input	REC-AV Module Output
Black	Chassis Ground
White/Red (Pin 7)	White/Black (Pin 8)
White/Blue (Pin 8)	White/Red (Pin4)

Module programming



Before the product is installed, be sure the module is programmed for needed functions. To change any one of the settings, double click the line corresponding to the function.

VES Emulation	Emulates rear seat entertainment for AV input. (Do not turn on if vehicle already has factory VES!)
Rear view camera	Turns on backup camera input to add an aftermarket camera. (Also required for VES input.)
12V output when camera is forced	Supplies +12v on Pin 8 (White/Black) when forced camera is enabled or the when the vehicle is in Reverse.
Front view camera	Supplies +12v on Pin 4 (White/Red) when front camera is activated.