

NAV-TV

INTERFACING THE FUTURE

100 NW 11th Street, Boca Raton, FL 33432 TEL 561-955-9770 FAX 561-955-9760

www.nav-tv.com info@nav-tv.com

REC-AV_XG

Video/Camera/A/V input for 06-08 Chrysler REC navigation radio

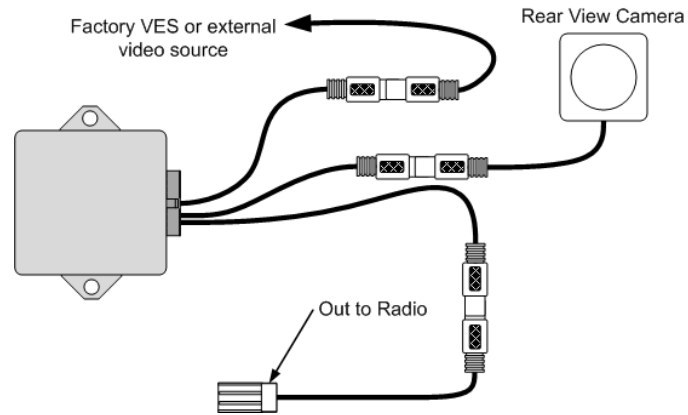
What's in the Box	
<ol style="list-style-type: none"> 1. Plug-n-Play harness 2. REC-AV module 3. Camera/video harness 4. USB cable 5. Audio T-harness 6. AV switcher (optional) 7. XG adaptor harness 	<p>Optional: Sold Separately</p>
Function	Operation
<p>VES</p>	<p>Press the "MODE" button until VES tab is highlighted. Once the tab is selected, the video input will automatically be displayed.</p>
<p>Rear view camera/Forced camera</p>	<p>Double press the power button on the radio. This will automatically display the backup camera regardless of gear or motion. To disable forced camera, double press the radio power button again.</p>
<p>Front camera</p>	<p>When the <i>Front view camera</i> feature is enabled, every time the radio goes into forced camera mode, it will toggle between the rear camera and the front camera. (The order is: radio, rear, radio, front, radio, ...)</p>
Installation	
<ol style="list-style-type: none"> 1. Remove the radio from the dash. 2. Plug in the supplied T-harness between the radio and factory connection (22 pin connector.) 3. Connect the module to the harness and locate in a secure location in the dash (be sure to program the module for required features before installation.) 4. Run the USB cable from the module to a location that can be accessed in the future, in case the module needs to be reprogrammed or updated. <p>Backup Camera (only):</p> <ol style="list-style-type: none"> 1. Install backup camera, run the video signal and camera power to the radio. 2. Plug the video signal into the RCA attached to the 3 pin plug. 3. The power wire of the camera gets connected to pin 12 (OUTPUT 2) or pin 13 (OUTPUT 3) of the filter. <ul style="list-style-type: none"> • Do not connect the camera power to reverse lights, otherwise forced camera will display a blank screen. 	

VES/AV input and Rear Camera

The REC-AV will internally enable VES* and rear camera switching without the need for an external switcher.

1. Connect the RCA labeled "VIDEO TO RADIO" to the supplied 3-pin to RCA harness.
2. Connect the rear view camera to the RCA labeled "BACKUP CAM". The power from the camera can be connected to pin 12 (OUTPUT 2) or pin 13 (OUTPUT 3).
3. Connect the VES/external video source to the RCA labeled "VIDEO IN".

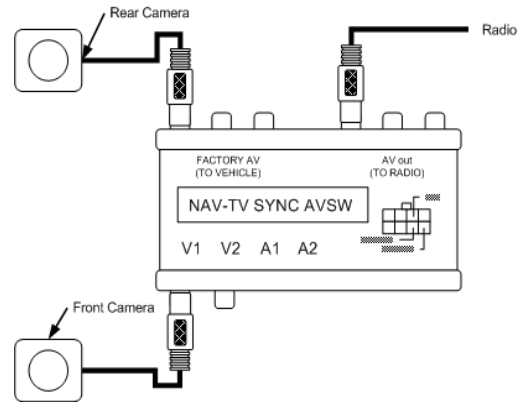
* Factory VES requires a send in modification for video to be viewed on the radio.



Front and Rear Camera

❖ When the optional switcher is being used, do not use the RCAs on the REC-AV Plug-n-Play harness.

1. The Front camera signal goes to the Yellow RCA labeled "FACTORY AV" of the AV switcher.
2. Plug the supplied 3-pin to RCA harness into the radio. Plug the other end into the Yellow RCA labeled "AV OUT" of the AV switcher.
3. The Front camera signal goes to the RCA labeled "V1" of the switcher.
4. The black wire of the switcher goes to chassis ground.
5. The White/Blue wire (pin 8) goes to White/Red (pin 11) of the REC-AV module.

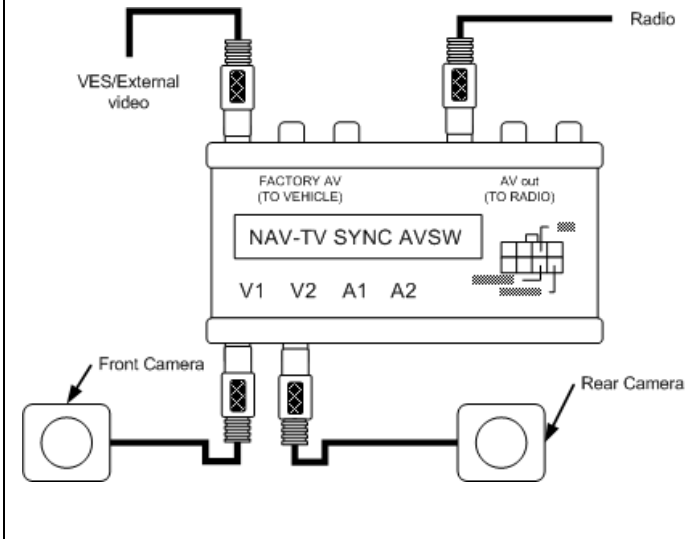


VES input w/ Rear & Front camera

❖ When the optional switcher is being used, do not use the RCAs on the REC-AV Plug-n-Play harness.

1. Connect the supplied 10-pin T-harness with Red and White RCAs between the radio and factory harness. (Note that there may be no factory harness in this location.)
2. Plug the audio out of external AV source to the Red and White RCAs.
3. Connect the external AV video to the Yellow RCA labeled "FACTORY AV" of the AV switcher.
4. Plug the supplied 3-pin to RCA harness into the radio. Plug the other end into the Yellow RCA labeled "AV OUT" of the AV switcher.
5. The Front camera signal goes to the RCA labeled "V1" of the switcher.
6. The Rear camera signal goes to the RCA labeled "V2" of the switcher.

- Note - If the vehicle has factory VES installed, **DO NOT** connect audio T-harness.
- Factory VES requires a send in modification for video to be viewed on the radio.



*Note - The audio inputs/outputs are not used.

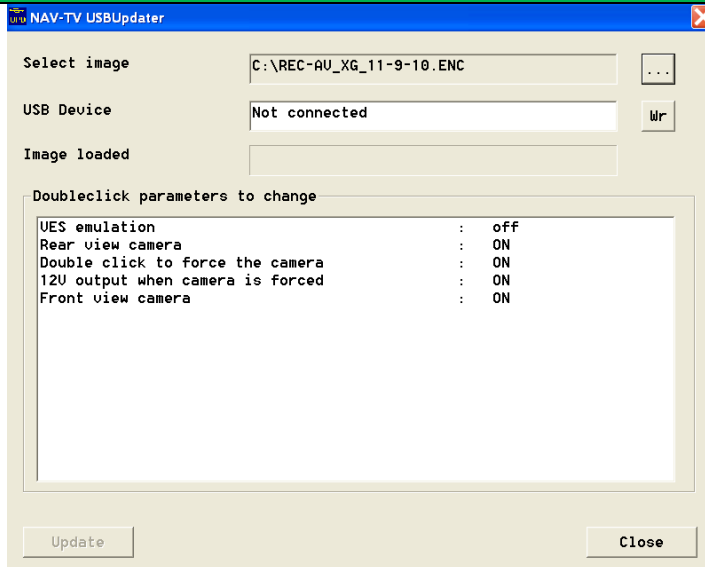
Multiple video inputs using the optional switcher

When installing a front camera with rear camera and VES emulation, an optional switcher is required. This will allow multiple video inputs to be sourced in properly.

Switcher connections	Input Source
Factory AV	External Video source
AV out	3-pin to RCA plug to Radio
V1	Front Camera
V2	Rear Camera

Switcher	REC-AV Output
Black	Chassis Ground
White/Blue (pin 8)	White/Red (pin 11)
White/Red (pin 7)	White/Blue(pin 12)

REC-AV programming



Before the product is installed, be sure the module is programmed for needed functions. To change any one of the settings, double click the line with the feature to be enabled/disabled.

VES Emulation	Emulates rear seat entertainment for AV input (Do not turn on if vehicle already has factory VES.)
Rear view camera	Turns on rear camera input to add an aftermarket camera. (Also required for VES video input.)
Double click to force camera	Enables camera mode to be engaged at any time.
12U output when camera is forced	Supplies 12v out on Pin 12 when forced camera is enabled or the when in reverse
Front view camera	Supplies 12v out on Pin 11 when front camera is activated.

ALLGIG XG pin out

18 Way connector

1. 12v+ Continuous Power
2. Input 1 – NOT USED
3. Input 2 – NOT USED
4. Input 3 – NOT USED
5. RX – NOT USED
6. Relay 1 – Common – Video OUT to Radio
7. RCA Common Shield
8. CAN HI – Radio Side
9. CAN HI – Vehicle Side
10. Ground
11. Output 1 – Front Camera 12v out @ 1A
12. Output 2 – Rear Camera 12v out @ 1A
13. Output 3 – Accessory 12v out @ 1A
14. TX – NOT USED
15. Relay 1 – N/O (normally open) – Video IN
16. Relay 1 – N/C (normally closed) – Camera IN
17. CAN LOW – Radio Side
18. CAN LOW – Vehicle Side

