

ALLGIG XG







Overview

- Enables Video in Motion (VIM) for both internal DVD and VES
- Allows Navigation Entry in Motion
- Enables the “View Video” button on radios that have this button locked out

With additional parts from NAV-TV, it will also:

- Enable Bluetooth and voice recognition on RER radios (ALLGIG MIC)
- Enable rear view camera input (AV harness & camera)
- Emulate VES to allow for additional external AV devices (AV harness & AVSW)
- Allow for the addition of an additional camera, such as a front view or FLIR (AV harness & camera)
- Enable video out of the internal DVD to external monitors (AV harness)

Note: The “Video Out” on the AV harness will only display the image from the internal DVD player. The camera or VES inputs will not display through the “Video Out”. The internal DVD will pause when VES DVD is selected.

What's in the Box	Optional Equipment
 <p>1. PNP T-Harness</p>  <p>2. CAN Filter box</p>  <p>3. USB programming cable</p>	 <p>ALLGIG MIC</p>  <p>ALLGIG AV</p>  <p>AVSW Switcher</p>

Operation:

Video in Motion/Navigation entry in motion:

Video from internal DVD or any external video source, including factory VES, can be viewed while vehicle is in drive and moving. All functions of the navigation will be unlocked while in motion as well. There is no user interaction required to enable this feature.

Force camera Mode

Forced camera will work in multiple ways, depending on hardware installed and programming of the module. To force the camera, press the radio power button 2 times in 1 second. (RBZ & RHB radios require a second pause between presses)

Backup camera only- Whenever the vehicle is in reverse, the screen will switch to the backup camera input. If forced camera is desired, as to see behind the vehicle when driving (viewing of rear traffic or a trailer in tow), press the radio power button twice.

Backup camera with Front view (second) camera- When both front and rear cameras are installed and programmed, the radio will cycle through the 2 cameras in the following sequence: radio, rear view camera, radio, front view camera, radio...

- Start with radio on, regardless of source.
- Press radio power 2 times to force rear view camera.
- Press radio power 2 more times to return to radio.
- Press radio power 2 times again to force front camera.



- Press radio power 2 times once more to return to radio.

If forced front camera is active and the vehicle is placed into reverse, the rear camera will be displayed, then the front camera image will return when shifted out of reverse. The screen will stay in this state until the power button is pressed 2 times or the key has been cycled.

*Note – The current audio source will not change when forced camera is activated.

External Audio/Video input

To view an external AV source, the optional AV harness is required.

To access the external AV input:

- Press the Radio/Media button to the left of the radio screen to access the Media page of the radio, i.e., HDD, JB, DISC, etc. (As per picture on right.)
- Touch VES; this will open a new window. Select Aux 1 or Aux 2 to play the audio from the selected external AV source.
- To view the video from this source, press the "VIEW VIDEO" button.



Multiple AV sources:

If more than 1 AV source is installed, only "VES AUX 1" and "VES AUX 2" should be programmed; turn off "VES DVD". To properly select the AUX inputs, the AVSW will be required. (See page 4.)

Programming

Video in Motion; address in motion: (Default ON) Allows the user to watch internal DVD or external VES sources while the vehicle is in Drive and in motion. This will also enable navigation address entry while in motion.

REN Radio: (Default OFF) Only turn ON if the radio is a REN (3 letters on the bottom right of the radio below the AUX jack).

VES emulation: (Default ON) Turns on VES emulation to allow for an external video source to be viewed on the radio. (Do NOT turn this on if the vehicle already has a rear-seat entertainment system.)

VES DVD: (Default OFF) Emulates the external rear seat entertainment DVD player. It is only used as a source input; it will not control an external DVD. (In almost all cases, this option should be left off.)*

VES AUX 1: (Default ON) Emulates the external AUX 1 input for an external AV source to be selected.

VES AUX 2: (Default OFF) Emulates the external AUX 2 input for an external AV source to be selected.

Rear View Camera: (Default ON) Turn this feature ON, when adding a reverse camera to the vehicle.

Double click to force the camera: (Default ON) When this feature is ON, the camera input will be displayed on the screen regardless of gear or speed.

12v output when camera is forced: (Default ON) Will supply +12v on "OUTPUT 2" whenever camera is forced; this is used to power the front camera.

Front view camera: (Default OFF) This feature will allow the unit to switch between a front view camera and rear view camera when forced camera is requested. **

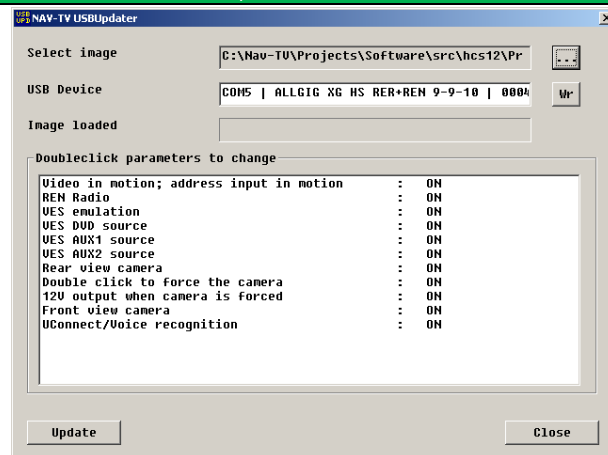
UConnect/Voice Recognition: (Default OFF) Turns on the internal Bluetooth and voice recognition module. When this option is turned on, the required ALLGIG MIC will need to be installed. #

* This option is only available for HS radios.

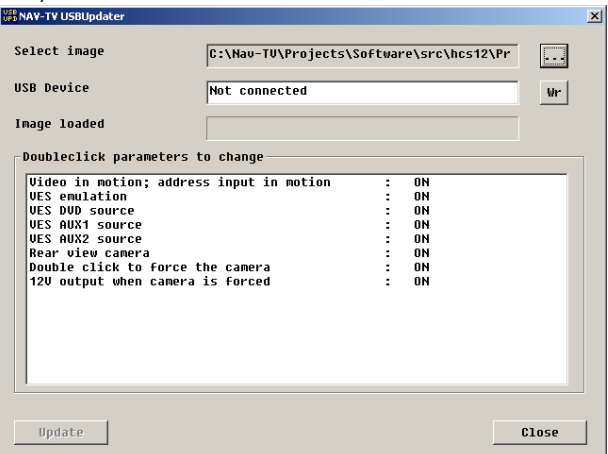
** When using a forward-facing camera, be sure to use a standard image camera. If a reverse camera is used the image will be mirrored.

Only available for the RER radios.

Updater screen shot



RER/REN UPDATER view



RBZ/RHB UPDATER view

Installation:

1. Remove the radio from the dash and set to the side.
2. Plug the module T- Harness into the main power harness. (If the vehicle has an external UConnect or iPod module, make sure that the external module is plugged into the radio first, then the T-Harness.)
3. Plug in the black module and find a location to solidly mount behind the dash.
4. Connect the supplied USB cable and run to a location easily accessible. This is for future updates, so the unit doesn't have to be removed.
5. Reinstall the radio. Before putting the vehicle together, verify the operation of the unit.

Camera Input (requires optional AV harness)

IF INSTALLING JUST A REAR CAMERA, PLUG THE CAMERA DIRECTLY INTO THE AV HARNESS. DO NOT PLUG INTO THE ALLGIG MODULE!!!

The vehicle may already have a harness plugged into the AV plug. The AV harness will go between the radio and factory harness.

Rear Camera connection: *

To connect the rear view camera to the radio, the optional AV harness is required.

1. The RCA from the camera plugs into the female RCA of the XG module harness labeled "CAMERA INPUT".
2. The male RCA of the XG module connects to the "CAMERA INPUT" of the AV harness.
3. Find a good ground for the camera.
4. It is recommended that the power for the camera gets connected to OUTPUT 1 of the module. If power is connected to the reverse light, the camera will not be powered when the camera is forced.

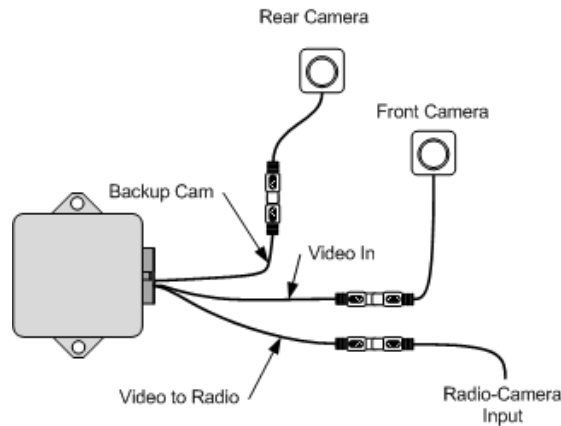
*Note- If the vehicle is equipped with a factory camera, the Male RCA on the vehicle side labeled "FACTORY CAMERA" goes into the "CAMERA INPUT" of the XG module. For forced camera to work the factory camera power wire will need to connect to the XG module's OUTPUT 1.

Front Camera connection:**

1. Follow the above directions for installation of the rear view camera.
2. Once the front camera is mounted connect the video to the female RCA labeled "Video In" on the XG module.
3. Power of the front camera gets connected to "OUTPUT 2" of the XG module.

*For forced camera to work, the module needs to be programmed before installation.

** For front camera to be viewed; Rear view camera, Front view camera, Double click to force the camera, and 12v output when camera is forced, need to be programmed to be ON.



AV input (requires optional AV harness)

Single AV source:

1. Plug the external AV source into the "INPUT" RCA's of the AV harness.
2. Connect the AV harness between the factory wiring harness (if equipped) and the radio.

*Note- Only HS radios can emulate AUX 1 & AUX 2. Low Speed radios can only emulate AUX 1.

Multiple AV Sources: (Only supported on High Speed radios)

When installing multiple AV sources the optional AVSW is required to switch between the sources. For the radio to properly switch between sources, the XG module needs to be programmed with VES emulation, AUX 1 & AUX 2 "ON".

*Note- Do not enable REAR DVD; the radio will not switch between REAR DVD and AUX1.

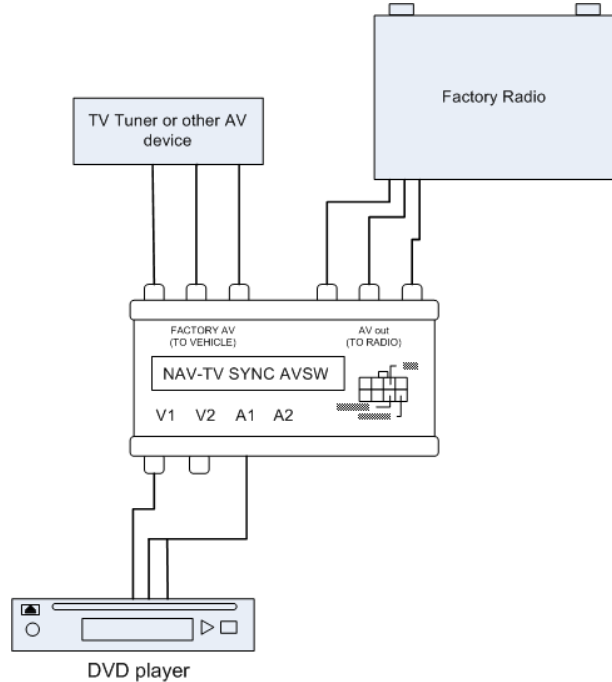
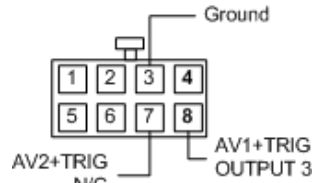
AVSW connections:

Factory AV (To Vehicle):
 Yellow – Video from 1ST AV
 Red- Right audio from 1ST AV
 White- Left audio from 1ST AV

AV out (To Radio):
 Yellow- Video out to radio
 Red- Right audio out to radio
 White- Left audio out to radio

V1:
 Video in from 2nd AV source
 V2:
 NO CONNECTION
 A1:
 3.5mm Left/Right audio from 2nd AV source
 A2:
 NO CONNECTION

Power connection:
 Black- ground
 White/Red- No Connection
 White/Blue- connects to OUTPUT 3 of ALLGIG XG



ALLGIG XG pin out

18 Way connector

1. 12v+ Continuous Power
2. Input 1 – NOT USED
3. Input 2 – NOT USED
4. Input 3 – NOT USED
5. RX – NOT USED
6. Relay 1 – Common – Video OUT to Radio
7. RCA Common Shield
8. CAN HI – Radio Side
9. CAN HI – Vehicle Side
10. Ground
11. Output 1 – ACC out @ 1A
12. Output 2 – Forced Camera 12v out @ 1A
13. Output 3 – 12v out when VES AUX2 is selected; connects to AVSW
14. TX – NOT USED
15. Relay 1 – N/O (normally open) – Video IN
16. Relay 1 – N/C (normally closed) – BUP CAM IN
17. CAN LOW – Radio Side
18. CAN LOW – Vehicle Side

