
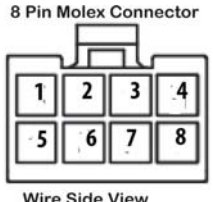
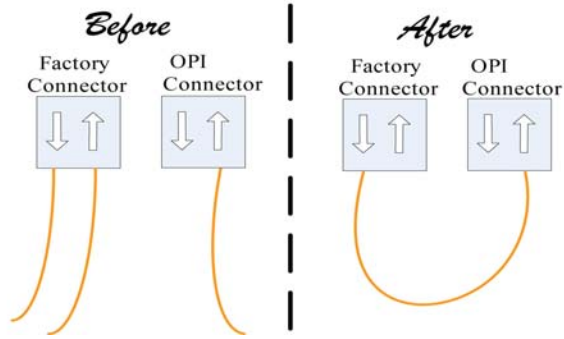
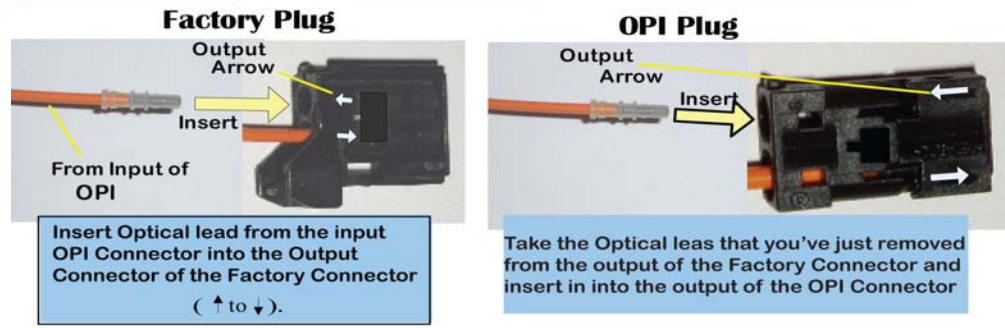
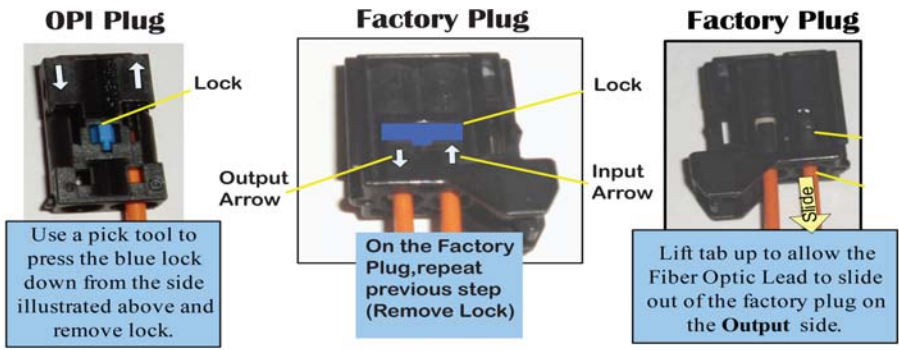


## OPI-M

Enables iPod or AUX-In for 2003 and Up MOST equipped Mercedes Benz ML, GL, R, E, S, CLS class vehicles

What's in the box	Package Contents
<ol style="list-style-type: none"> <li>1. OPI-MB Interface module</li> <li>2. Interface power cable</li> <li>3. iPod cable</li> <li>4. Optical cable</li> <li>5. Optical Bypass</li> <li>6. USB cable (have the "A" connector side of the cable accessible to the passenger side of the vehicle cabin, but hidden from view).</li> </ol>	
8 Pin Molex wiring guide	8 Pin Molex connector image
<p>Pin (3) Ground – Black wire Pin (7) - +12Volt Constant Power – Yellow wire</p>	

## Optical Cable Connections



## Installation general:

Install Interface behind Radio and connect the optical cable to interface and radio, connect the power harness Black wire to ground and the Yellow wire to +12V constant power. Note: if vehicle is equipped with a CD-changer it must be disconnected and the Optical Bypass installed on the Fiber-optic cable that was connected to the CD-changer.

## Operating Instructions

To activate the iPod interface press the **Audio** button and then press the **CD changer** button to enter iPod mode.

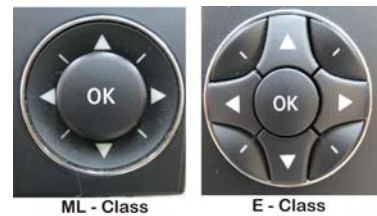
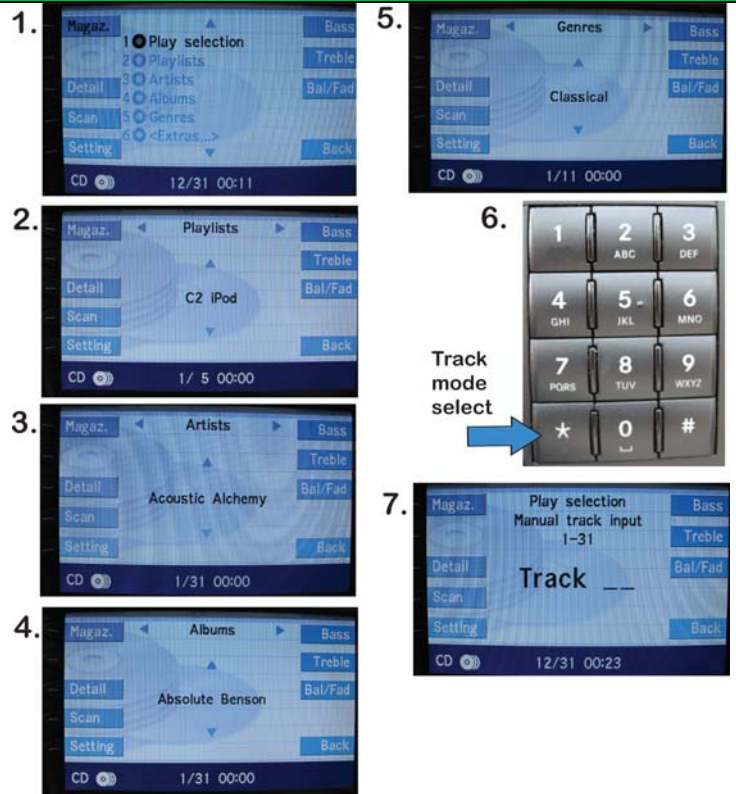


## Operating Instructions Continued

1. Press the **Magaz.** Button on radio to enter iPod selection mode screen, then press the corresponding number on the keypad for the selection you wish to select. (2 – Playlist, 3 – Artist, 4 – Albums, 5 – Genres or 6 – Extras).
2. Select **Playlist** by pressing the **# 2** button on the keypad, then use the **Transport** button (**Up Arrow** and **Down Arrow**) to scroll through the Playlists, when the desired selection is displayed press the **OK** button and then press **# 1** on keypad to play selection.
3. Select **Artist** by pressing the **# 3** button on the keypad, then use the **Transport** button (**Up Arrow** and **Down Arrow**) to scroll through the Playlists, when the desired selection is displayed press the **OK** button and then press **# 1** on keypad to play selection.
4. Select **Albums** by pressing the **# 4** button on the keypad, then use the **Transport** button (**Up Arrow** and **Down Arrow**) to scroll through the Playlists, when the desired selection is displayed press the **OK** button and then press **# 1** on keypad to play selection.
5. Select **Genres** by pressing the **# 5** button on the keypad, then use the **Transport** button (**Up Arrow** and **Down Arrow**) to scroll through the Playlists, when the desired selection is displayed press the **OK** button and then press **# 1** on keypad to play selection.
6. To select **Tracks** press the **Seek Forward** or **Seek Back** buttons or press the \* button on the keypad and the track number.
7. After pressing the \* button on the keypad and then the track number using the number keys to select the track from the current playlist.

**Note 1:** If you select track 31 it will go to the next page of tracks in the current playlist and if track 32 is displayed on the radio selecting track 32 will take you to the previous page in the current playlist.

**Note 2:** Selecting the **<Extras...>** option by pressing **# 6** on the keypad will take you to the Extras menu: Version Date, Radio control of iPod, Manual control of iPod, and AUX In mode of the interface for external audio source (AUX In cable sold separately by request when ordering the OPI-Kit)



**Transport Buttons**



**Seek Buttons**

**Agreement:** End user agrees to use this product in compliance with all State and Federal laws. NAV-TV Corp. would not be held liable for misuse of its product. If you do not agree, please discontinue use immediately and return product to place of purchase.