



100 NW 11th street, Boca Raton, FL 33432
Tel. 561-955-9770 Fax. 561-955-9760

www.nav-tv.com info@nav-tv.com

ALLGIG-USB

Multi-purpose OEM integration for Chrysler MyGIG

Certain features are intended for passenger and off-road use only. User must obey all State and Federal regulations

Overview

The NAV-TV ALLGIG provides the following features when correctly installed:

- Enables video in motion.
- Enables navigation entry in motion.
- Enables VES display in motion.

The following features are available with the purchase of optional components:

- Enables Bluetooth and voice recognition on RER radios. (Requires microphone assembly, sold separately)
- Enables automatic backup camera input when in reverse. (Requires GIGCam or AV harness + Camera)
- Enables VES Emulation mode for auxiliary audio/video input. (Requires AV harness)
- Enables a full-time video input for a front or rear camera or FLIR night-vision system. (Requires AV harness & optionally, a video switch for a second camera)
- Enables a video output to display built-in DVD image on aftermarket monitor(s). (Requires AV harness)
- Enables an external navigation display input for international use. (Requires AV harness)

Note:

The Video Out on the AV harness will only display the image from the built-in DVD player. The camera and VES inputs will not display through the Video Out, and the internal DVD will pause when VES DVD is selected.

Compatibility

There are 2 versions of the AllGIG module. Depending on the vehicle, either the AllGIG-HS or the AllGIG-FT is appropriate. Please verify that you are using the correct module for your vehicle prior to installation.

AllGIG-HS	AllGIG-FT
1. 2008 Chrysler Town and Country	1. 2007-2008 Chrysler Sebring
2. 2008 Dodge Caravan	2. 2007-2008 Chrysler Avenger
3. 2008 Dodge Nitro	3. 2008 Chrysler 300, Magnum
4. 2009 Dodge Ram	4. 2008 Chrysler Aspen
5. 2008 Jeep Liberty	5. 2008 Dodge Durango
6. 2008 Jeep Wrangler	6. 2008 Dodge Charger
	7. 2008 Dodge Dakota
	8. 2009 Dodge Challenger
	9. 2008 Jeep Grand Cherokee
	10. 2008 Jeep Commander

Agreement: End user agrees to use this product in compliance with all State and Federal laws. NAV-TV Corp. would not be held liable for misuse of its product.

If you do not agree, please discontinue use immediately and return product to place of purchase.
This product is intended for off-road use and passenger entertainment only.



100 NW 11th street, Boca Raton, FL 33432
Tel. 561-955-9770 Fax. 561-955-9760

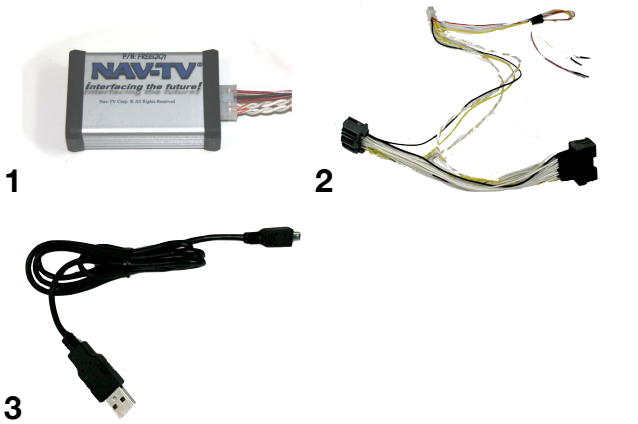
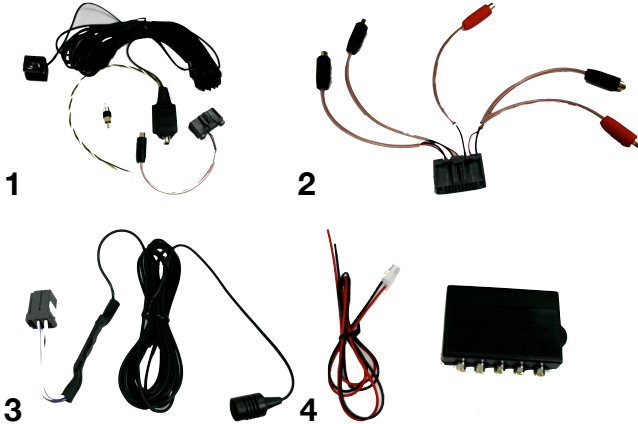
www.nav-tv.com info@nav-tv.com

ALLGIG-USB

Multi-purpose OEM integration for Chrysler MyGIG

Certain features are intended for passenger and off-road use only. User must obey all State and Federal regulations

Overview

What's in the box	Fig. 1 - Package Contents
<ol style="list-style-type: none"> 1. Nav-TV ALLGIG-USB module. 2. Plug'n'Play vehicle harness. 3. USB cable. 	
Optional Components	Fig. 2 - ALLGIG Options
<ol style="list-style-type: none"> 1. GIGCam. 2. AV harness. 3. Microphone assembly. 4. Video switching assembly. 	

The default operation mode of the ALLGIG is to allow video and navigation entry while the vehicle is in motion. This setting, along with other options can be changed with a PC via our USB interface and software, available for download at www.navtv.com/software_updates.php. If the vehicle did not have a backup camera option, it will now be enabled from the MENU --> System Setup --> Camera Setup screen. The camera (if installed) can also be manually activated when not in reverse by pressing the power button twice.

Optionally, a second video source can be connected via the Video Switching Assembly option. This source will then be activated when the power button is pressed twice and will display on the screen instead of the image from the backup camera. This image will be displayed constantly until either the power button is pressed twice or the vehicle is shifted into and out of Reverse.

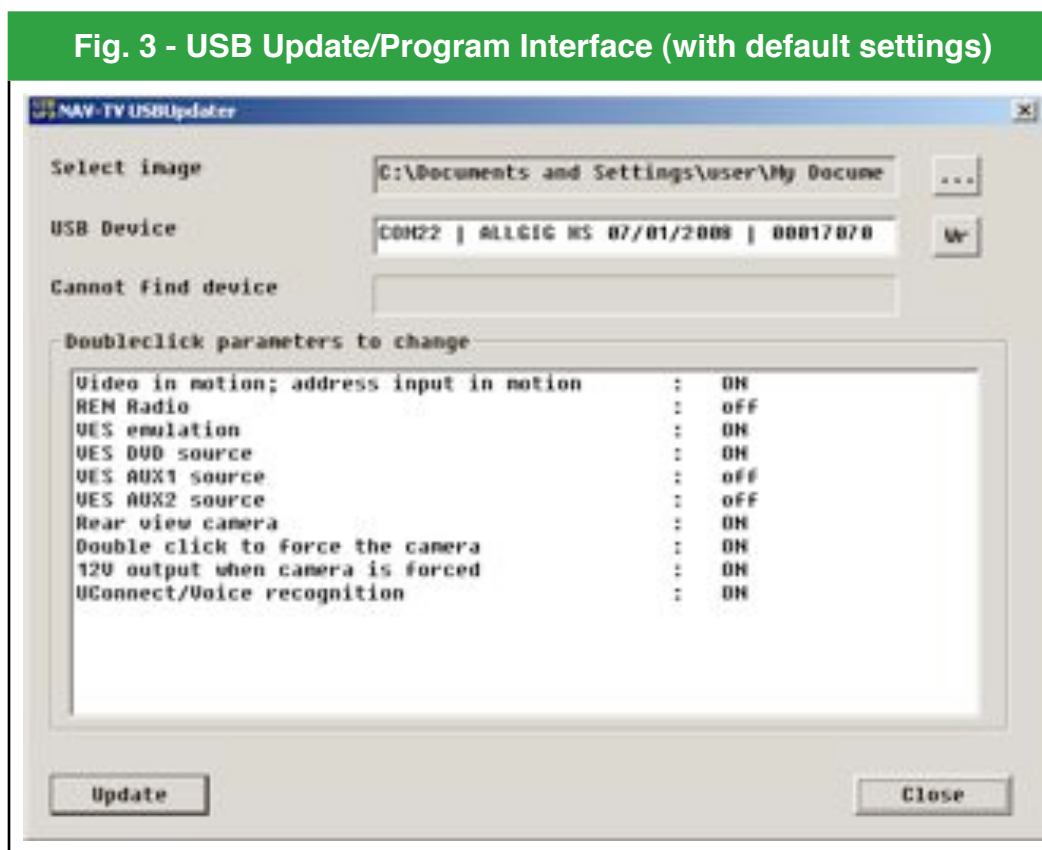
ALLGIG-USB

Multi-purpose OEM integration for Chrysler MyGIG

Certain features are intended for passenger and off-road use only. User must obey all State and Federal regulations

USB

Fig. 3 - USB Update/Program Interface (with default settings)



The USB interface allows for the selection of various options or modes for the AllGIG. Those options currently include: Video In Motion / Navigation Entry In Motion Enable/Disable.

RER/REN radio selection. IT IS VERY IMPORTANT THAT THIS BE SET CORRECTLY FOR YOUR TYPE OF RADIO!!! (Check the 3-letter code in the bottom-right corner of your MyGIG.)

VES Emulation for an additional Audio/Video input Enable/Disable. If your vehicle is equipped with VES, turn this feature **OFF!**

VES DVD source selectable. This is the standard source on the AllGIG-HS.

VES AUX1 source selectable. This is the standard source on the AllGIG-FT.

VES AUX2 source selectable. This source should normally never need to be selected.

Rear view camera Enable/Disable. When an aftermarket camera is installed in the vehicle, select **ON!**

Double press power button to enable camera full-time.

12 volt output when power button is double pressed. (To activate video switching.)

UConnect/Voice recognition Enable/Disable. (Requires microphone, if not equipped. Will not work with REN radio.)

Note:

There is only 1 video input on the AV harness, so only DVD or Aux1 need to be selected for our AV cable.

Agreement: End user agrees to use this product in compliance with all State and Federal laws. NAV-TV Corp. would not be held liable for misuse of its product.

If you do not agree, please discontinue use immediately and return product to place of purchase.
This product is intended for off-road use and passenger entertainment only.

ALLGIG-USB

Multi-purpose OEM integration for Chrysler MyGIG

Certain features are intended for passenger and off-road use only. User must obey all State and Federal regulations

Installation

Removal: Town & Country / Caravan

1. Pry open screw covers above radio, Remove (2) Philips screws.
2. Lift top cover, Remove (2) Philips screws above radio.
3. Remove (6) Plastic clips on lower console, (3) on each side, pull console back (Clips retain center of console)
4. Remove (2) Philips screws securing lower A/C trim panel, pull trim backwards, unplug A/C controls, traction/hazard switch and clock.
5. Remove (4) Philips screws securing radio, pull radio and unplug all radio connectors.



Removal: Jeep Wrangler (JK)

1. Pop upper and lower covers. Clips are at the rear of the top cover and top of the lower cover.
2. Remove (4) 7mm screws holding radio, A/C trim.
3. Pull trim just enough to gain access to radio. No need to remove A/C Controls.
4. Remove (4) 7mm screws securing radio, Pull radio and unplug all connectors.



ALLGIG-USB

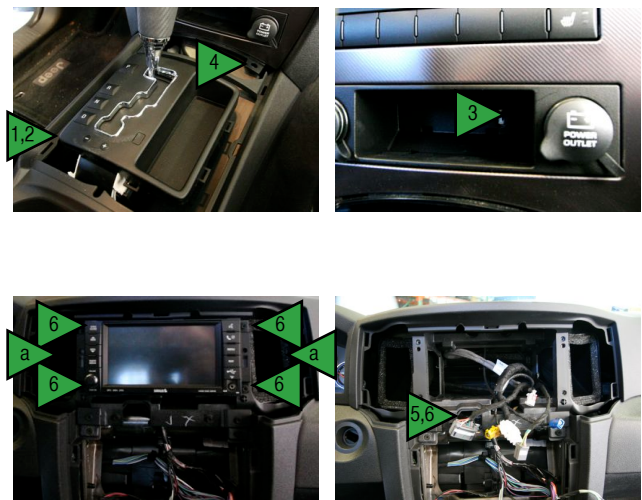
Multi-purpose OEM integration for Chrysler MyGIG

Certain features are intended for passenger and off-road use only. User must obey all State and Federal regulations

Installation

Removal: Grand Cherokee

1. Gently pry off chrome bezel from shifter trim.
2. Pry off shifter trim panel.
3. Remove (1) Phillips screw in small compartment between the 2 power jacks on lower console.
4. Starting from the bottom, gently pry off the center dash (including climate controls and 2 vents (a) on either side of radio).
5. Unplug all connectors and cables from climate controls and power jacks.
6. Remove (4) Philips screws securing radio, pull radio and unplug all radio connectors.



Removal: Chrysler 300

1. Starting from the bottom compartment, gently pry off chrome center dash trim (including climate controls, clock and 2 vents) by pulling away from the dash.

Note: There is no need to unplug the clock. Once the connectors to the climate controls are unplugged at the bottom, the entire unit can be swung up and out of the way.

2. Remove (4) Philips screws securing radio, pull radio and unplug all radio connectors.



ALLGIG-USB

Multi-purpose OEM integration for Chrysler MyGIG

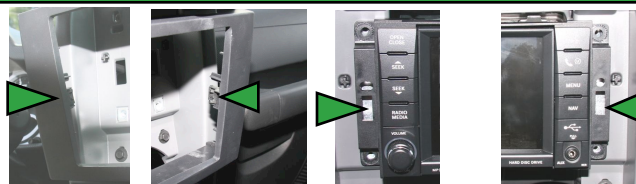
Certain features are intended for passenger and off-road use only. User must obey all State and Federal regulations

Installation

WARNING !!!

Metal clips used on the radio trim tend to enter the radio face once trim is removed. Inspect the radio trim, if a clip is missing it is **IN THE RADIO FACE !!!** Use needle-nose pliers to pull the stray clip through the clip opening on the radio.

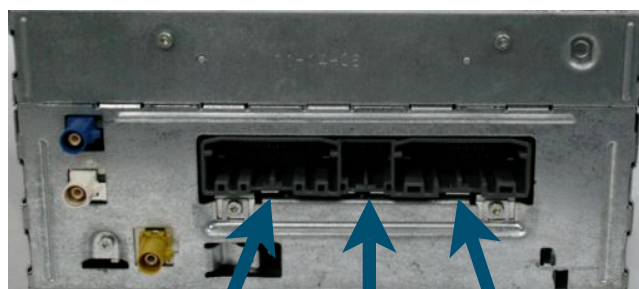
Fig. 4 - STRAY CLIP



Connections

1. Connect supplied Plug'n'Play harness to radio, factory plug and AllGIG.
2. If UConnect is required, connect microphone assembly (sold separately) to radio.
3. Connect video harness for Backup camera, Video out and AUX A/V input (sold separately.)
4. If a second camera/video only source is required, connect the red wire of the video switcher (sold separately) to the White/Blue wire of the Plug'n'Play harness.
5. If a camera is connected, there are 2 ways to power it:
 - a) When the camera is used only when backing up, connect camera power to the reverse lights.
 - b) When the camera will be used at any time while the vehicle/radio is on, connect the camera to constant power through a relay and trigger the relay with the White/Red wire of the Plug'n'Play harness.

Fig. 5 - Car Wiring



AV/GIGCam Microphone Plug'n'Play